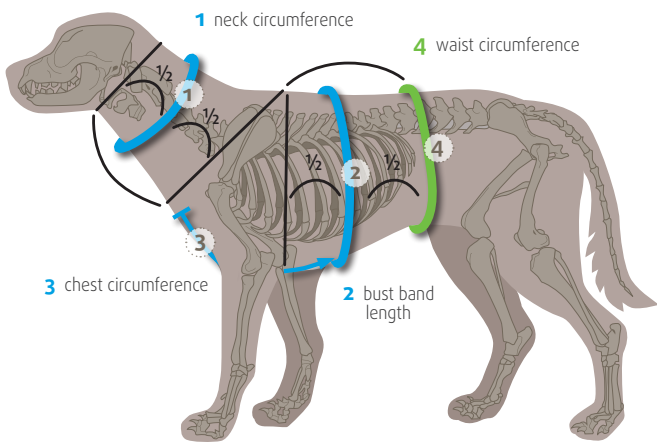
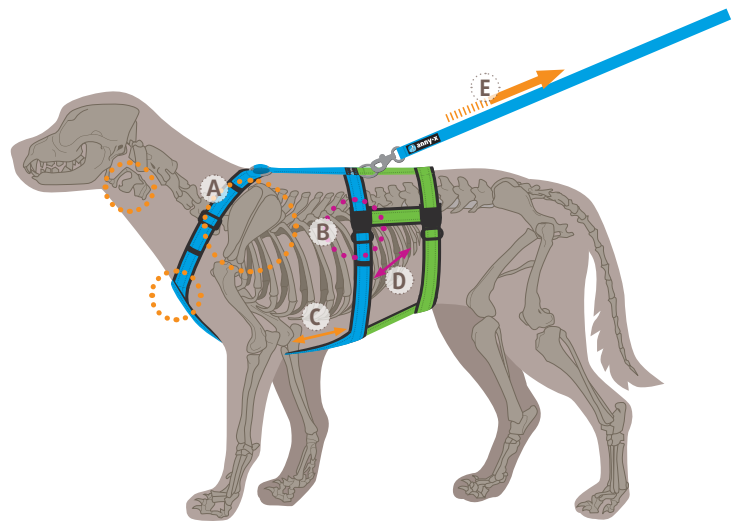




## FIND THE RIGHT SIZE!



## THAT FITS!



# HOW TO DETERMINE THE RIGHT SIZE!

## Not found the right size?

Our chest harness FUN black/black is now available in 10 additional intermediate sizes.

CHEST HARNESS FUN · PROTECT · SAFETY	XXS	XS	S	M	L	XL
<b>1</b> neck circumference tight-fitting, in the middle of the neck	14 - 22 cm	22 - 36 cm	26 - 40 cm	30 - 48 cm	33 - 58 cm	48 - 70 cm
<b>2</b> chest circumference in the middle of the chest	36 - 42 cm	43 - 52 cm	52 - 64 cm	62 - 74 cm	70 - 86 cm	78 - 96 cm
<b>3</b> bust band length starting from the sternum, through the front legs, to the middle of the rib cage	16,5 cm	19,5 cm	23 cm	30 cm	35 cm	38,5 cm
<b>4</b> waist circumference (Safety) at the narrowest point behind the rib cage	-	38 - 46 cm	48 - 56 cm	56 - 66 cm	62 - 78 cm	-
<b>weight</b>	3 - 7 kg	6 - 12 kg	9 - 19 kg	18 - 30 kg	26 - 38 kg	35 - 50 kg
<b>breed examples</b>	Yorkshire Terrier Dachshund Maltese	Dachshund Fox Terrier Manchester Terrier	Beagle Podenco Andaluz Cocker Spaniel	Border Collie Retriever English Setter	Weimaraner Great Munsterlander Collie, Doberman	Newfoundlander Kuvazs Great Dane

The measurements include a tolerance of +/- 1 cm.

## THAT FITS! CHECK AFTERWARDS.

**A** The Y of the harness should sit on the sternum so that the shoulders and larynx are unimpeded.

**B** Two fingers should be able to fit between the chest strap and the dog's chest, so that it isn't too loose or too tight.

**C** The chest strap should fit with a large enough gap between the strap/band and the front legs to allow for unimpeded freedom of movement.

**D** When the harness is pulled, the chest strap should lie before the last rib.

**E Important:** Make sure to also check each position when the harness is in use, so that the dog's movement is not restricted when the leash is pulled.